

# Feeling good

Music / Lyrics:  
A. Newley, L. Bricusse  
Arr: Jetse Bremer

♩ = 54

SOLO

1

*mp* Free rhythm



Birds fly-ing high

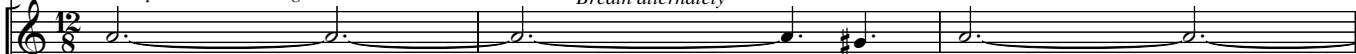
You know how I feel

Sun in the sky

*p*

*Opt: Imitation string tremelo's*

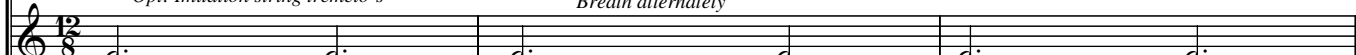
*Breath alternately*



*p*

*Opt: Imitation string tremelo's*

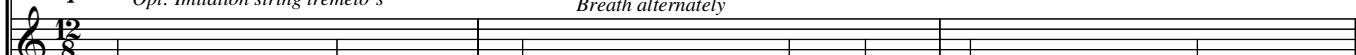
*Breath alternately*



*p*

*Opt: Imitation string tremelo's*

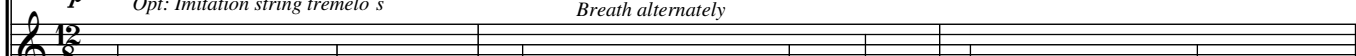
*Breath alternately*



*p*

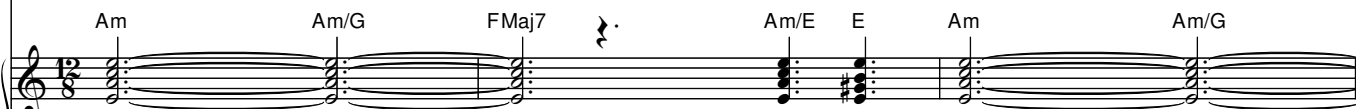
*Opt: Imitation string tremelo's*

*Breath alternately*



*uuh*

*uuh*



*p*

*p*

4



You know how I feel

Breeze drift-in' on by

You know how I feel

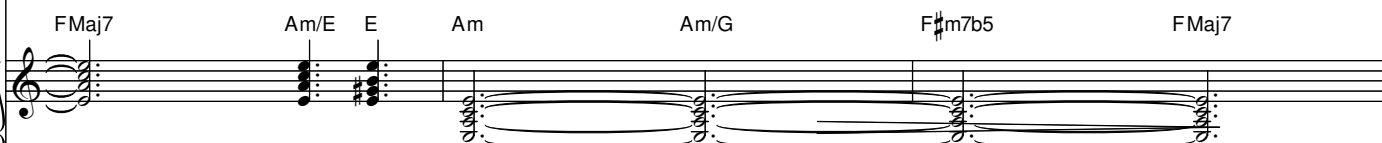
It's a

*uuh*

*uuh*

*uuh*

*uuh*



13

— feel-ing good

— ah ah

— ah ah

voo voo voo voo voo voo voo

voo voo voo voo voo voo voo

*mp* Fish in the sea—

*mp* Fish in the sea—

Am Am/G FMaj7 E Am Am/G

*mp*

*mp*

16

You know how I feel Riv-er run-ning free — You know how I feel —

You know how I feel Riv-er run-ning free — You know how I feel —

FMaj7 Am/E E Am Am/G FMaj7 Am/E E

25

Musical score for system 25. It includes a vocal line with lyrics: "Dra-gon-fly out in the sun you know what I mean, don't you know". The piano accompaniment features chords: D9/A, F/A, Am, Am/G, FMaj7, Am/E, and Dm/E. Dynamics include *mp* and *mf*. There are also vocalizations "uuh" and "pwa pwa pwa".

28

Musical score for system 28. It includes a vocal line with lyrics: "But-ter-flies all hav-in' fun you know what I mean Sleep in peace when day is done". The piano accompaniment features chords: Am, Am/G, FMaj7, Am/E, Dm/E, C, and Am. Dynamics include *mp*. There are also vocalizations "uuh".

37

ah— ah— ah— ah—

voo voo voo voo voo voo voo voo voo voo

voo voo voo oh oh

FMaj7 E Bbm Bbm/Ab Gbmaj7 Bb/F F

40

ah— ah— ah— ah ah ah ah ah ah ah ah ah

voo voo voo voo voo voo voo voo

oh oh— oh— oh oh oh oh— oh

Bbm Bbm/Ab Gbmaj7 Bb/F F Bbm Bbm/Ab

46

*ff*

Stars how I feel

Stars when you shine You know how I feel Scent of the pine

Stars how I feel

voo voo voo voo voo voo how I feel voo voo voo voo

*ff* Bm Bm/A GMaj7 Bm F#(5+) Bm Bm/A

49

free-dom free-dom

You know how I feel Oh free-dom is mine And I know how I feel

free-dom free-dom

voo voo voo voo free-dom free-dom how I feel It's a

GMaj7 Bm F# Bm Bm/A G#m7b5 GMaj7 F#

58

3

*mp*

*Free rhythm*

Musical staff for measure 58, vocal line. It begins with a whole rest, followed by a quarter note G4, a quarter note A4, and a quarter note B4. A triplet of eighth notes (C5, D5, E5) is marked with a '3' above it. This is followed by a quarter note D5, a quarter note C5, and a quarter note B4. The staff ends with a whole rest.

And I'm feel - - - ing — good —

Musical staff for measure 58, piano accompaniment (first staff). It contains a whole rest.

For me

Musical staff for measure 58, piano accompaniment (second staff). It contains a whole rest.

me

Musical staff for measure 58, piano accompaniment (third staff). It contains a whole rest.

For me

Musical staff for measure 58, piano accompaniment (fourth staff). It contains a whole rest.

For me

Piano accompaniment for measures 58-60. Measure 58 features chords Em9 and F#(5+). Measure 59 is a whole rest. Measure 60 features chords Bm and Bm/A. The piano part consists of chords in the right hand and a bass line in the left hand. Dynamics include *p* (piano).

61

Musical staff for measure 61, vocal line. It begins with a quarter rest, followed by a quarter note G4, a quarter note A4, a quarter note B4, a quarter note C5, a quarter note B4, a quarter note A4, and a quarter note G4. A triplet of eighth notes (F#4, E4, D4) is marked with a '2' above it. This is followed by a quarter note C4, a quarter note B3, and a quarter note A3. The staff ends with a whole rest.

I — feel so — good — I — feel —

Musical staff for measure 61, piano accompaniment (first staff). It contains a whole rest.

Musical staff for measure 61, piano accompaniment (second staff). It contains a whole rest.

Musical staff for measure 61, piano accompaniment (third staff). It contains a whole rest.

Musical staff for measure 61, piano accompaniment (fourth staff). It contains a whole rest.

Piano accompaniment for measures 61-63. Measure 61 features chords G and Bm/F#. Measure 62 features chords Bm and Bm/A. Measure 63 features chords G and Bm/F#. The piano part consists of chords in the right hand and a bass line in the left hand.